

OPERATOR'S USE AND CARE MANUAL

FORK LIFT ATTACHMENTS

Models CF48, CF74, CF92

Operation of the Elec-Trak Fork Lift attachments is very simple--as is their installation. They require very little maintenance, and reasonable care will result in excellent trouble-free performance.

Before installation of the lift, the electrical power outlet receptacle must be wired into the tractor. This receptacle may be installed for front or rear use. If it is planned to change the attachment from front to rear mounting, an additional receptacle should be installed. This receptacle is the KP37 Front/Rear Receptacle Kit. If the AP84 Auxiliary Power Pack is going to be used as a counterweight in conjunction with the Fork Lift, an additional receptacle kit is not required for alternate mounting since the AP84 includes the component parts of the KP37 kit.

The 750 pound rating on all lifts is dependent upon the 200 pound counterweight. Three options are available: (1) CW05, five 40-pound plates that bolt to the mounting arms, (2) AP84 Auxiliary Power Pack plus 30 pounds of weight, or (3) the standard weight box with 200 pounds of weight. To conform to the ANSI B56.1 specification as required by the OSHA regulations, the CF66 Overhead Guard (with mounting brackets) is also required.

<p>WARNING: Do not exceed lift capacity rating of 750 pounds at 18-inch load center!</p>

ASSEMBLY

1. Cut banding straps and shipping wires. Remove the forks and loose packages of hardware.
2. Unbolt and remove the angle supports and retain the hardware for reuse.
3. Remove the mounting arms and control lever extension and knob.
4. Remove the fork lift motor cover and connect the orange jumper wire from the motor terminal marked "+" to the upper switch terminal. Slide the boot over the switch terminal. Connect the black harness wire to the other motor terminal. Hold the wire in the position shown while tightening the connection. Connect the orange harness wire to the lower switch terminal and slide the boot over the terminal. Turn the wire terminals towards the center of the motor to prevent insulation damage when the cover is replaced. Replace the cover so that the wires exit the cover cutout towards the rear of the lift. See Figure 1.

5. Mount the angle support with the control lever brace to the motor end of the center cross-bar on the lift frame, using a 1/2 x 1 inch bolt, lockwasher and nut. Mount the other angle support similarly at the opposite end of the cross-bar. See Figure 2.
6. Mount rubber pads on the inside of each angle support using carriage bolts (round heads) and nuts. Install the bolts with the heads towards the center of the lift. Tighten the bolts to slightly recess their heads below the rubber pad surface. See Figure 2 insert.
7. Install the mounting arms on the lower cross-bar using 1/2 x 1 inch bolts, lockwashers and nuts. Notice that there is a left and right arm. See Figure 2.
8. Attach the lower ends of the angle supports to the mounting arm holes using 1/2 x 1 inch bolts, lockwashers and nuts.
9. Attach the caster wheels to the mounting pads with 1/2 x 1 inch bolts, lockwashers and nuts.
10. The mounting arms should now be in a vertical position. Pull down on the free ends of the arms to rotate the lift on its wheels.
11. IMPORTANT! Replace the solid plug near the top of the hydraulic cylinder with the breather plug provided.
12. Insert the control handle through the support and screw it into the top of the actuating lever. Screw in the longer threaded end fully.

OPERATION

A single lever controls operation of the fork lift:

1. To raise lift, pull control handle.
2. To lower lift, push control handle.

Whenever the control lever is released, the lift stops.

SAFETY PRACTICES FOR THE OPERATION OF INDUSTRIAL TRUCKS

- Do not drive trucks up to anyone standing in front of a bench or other fixed object.
- Do not permit unauthorized personnel to ride on powered industrial trucks. Provide a safe place to ride where riding of trucks is authorized.

- When leaving an industrial truck unattended, fully lower forks, place controls in neutral, shut off power, set brakes, and remove key or connector plug. Block wheels if the truck is parked on an incline.
- Maintain a safe distance from the edge of ramps or platforms while on any elevated dock, or platform or freight car. Do not use trucks for opening or closing freight doors.
- Set brakes and put wheel blocks in place to prevent movement of trucks, trailers, or railroad cars while loading or unloading. It may be necessary to fix jacks to support a semi-trailer during loading or unloading when the trailer is not coupled to a tractor. Check the flooring of trucks, trailers, and railroad cars for breaks and weakness before they are driven onto.
- Observe all traffic regulations, including authorized plant speed limits. Maintain a safe distance approximately three truck lengths from the truck ahead, and keep the truck under control at all times.
- Yield the right of way to ambulances, fire trucks, or other vehicles in emergency situations.
- Do not pass other trucks traveling in the same direction at intersections, blind spots, or other dangerous locations.
- Slow down and sound the horn at cross aisles and other locations where vision is obstructed. Travel with the load trailing if the load being carried obstructs the forward view.
- Cross railroad tracks diagonally wherever possible. Do not park closer than 8 feet from the center of railroad tracks.
- Look in the direction of, and keep a clear view of the path of travel.
- Ascend or descend grades slowly.
- Under all travel conditions, operate the truck at a speed that will permit it to be brought to a stop in a safe manner.
- Do not engage in stunt driving and horseplay.
- Slow down for wet and slippery floors.
- Properly secure dockboard or bridgeplates before driving over them. Drive over them carefully and slowly and do not exceed their rated capacity.
- Approach elevators slowly, and then enter squarely after the elevator car is properly leveled. Once on the elevator, neutralize the controls, shut off the power, and set the brakes.

- Avoid running over loose objects on the roadway surface.
- While negotiating turns, reduce speed to a safe level.
- When attachments are used, take particular care in securing, manipulating, positioning, and transporting the load. Operate trucks equipped with attachments as partially loaded trucks when not handling a load.
- Do not use open flames for checking electrolyte level in batteries.
- Keep industrial trucks in a clean condition, free of lint, excess oil and grease. Use noncombustible agents for cleaning trucks. Do not use low flash point solvents (below 100°F). Use high flash point solvents (at or above 100°F). Use precautions regarding toxicity, ventilation, and fire hazard connected with the agent or solvent used.
- Give special consideration to the proper functioning of tires, horns, lights, battery, controller, lift system (including load engaging means, chains, cable, and limit switches), brakes and steering mechanism. If at any time a powered industrial truck is found to be in need of repair, defective, or in any way unsafe, report the matter immediately to the designated authority, and the truck should be taken out of service until it has been restored to safe operating condition.

INSTALLATION

Front

1. Position the Fork Lift assembly with its angle iron mounting arms towards the front of the tractor.
2. Carefully position the tractor over the lift arms so that the mounting arms are fully straddled.
3. Raise the free ends of the mounting arms until the holes in the tractor hitch bale align with the holes in the arms. Secure with 1/2-13 x 1 bolts, lockwashers and nuts with the bolt heads towards the tires.
4. Place one of the five weight plates on the free end of the mounting arms, aligning the weight holes with the corresponding holes in the arms with the long through-bolts. Add the other four weights, aligning the holes after each one has been placed. Secure the weights with bolts, lockwashers and nuts.
5. Connect the lift motor plug with the lift receptacle under the hood.
6. Raise the lift to allow the forks to be installed on the back plate.

7. Install the Control Handle Extension and knob. Screw on the coupler fully before adding the extension and knob.
8. Removal follows these steps in the reverse order.

Rear

1. Position the fork lift with its mounting arms towards the rear of the tractor.
2. Carefully position the tractor so the mounting arms are fully straddled.
3. Install both triangular mounting bracket plates on the inside of the mounting arms with their beveled sides forward. Secure with 4 sets of bolts, nuts and lockwashers with the bolt heads outward.
4. Raise the free ends of the mounting arms until the holes in the tractor frame align with the holes in the mounting brackets. Slide the clevis pins through the mounting bracket holes and secure them with the hair-pin cotters.
5. Place one of the five weights on the free end of the mounting arms, aligning the weight's holes with the corresponding holes in the arms with the long through-bolts. Add the other four weights, aligning the holes after each one has been placed. Secure the weights with bolts, lockwashers and nuts.
6. Connect the lift motor plug with the lift receptacle located under the left rear fender.
7. Raise the lift to allow the forks to be installed on the back plate.
8. Remove the control handle extension if it is installed. Screw the knob into the control handle.
9. Removal follows these steps in the reverse order. DO NOT ATTEMPT TO DRIVE OFF THE LIFT WITH THE TRIANGULAR MOUNTING BRACKETS IN PLACE!

MAINTENANCE

Place a few drops of 30 weight machine oil on the caster wheel axles and caster bearings at least once a month.

Use only hydraulic oil (or 10 weight motor oil) in the hydraulic system. Never use hydraulic brake fluid.

Check nuts, bolts and other fasteners periodically for tightness.

SERVICE

If the lift does not raise to full height, check for leaks or a shortage of oil. Maintain the proper oil level.

To check the oil level: Remove the hexagon cap screw on top of the oil well. Fill the oil well with hydraulic oil to reach the notch on the dip stick. Use only hydraulic oil (or 10 weight motor oil) in the hydraulic system. NEVER USE HYDRAULIC BRAKE FLUID.

If the lift tends to creep downward under a load, a speck of dust may be obstructing the seat of the valve and be allowing leakage. To correct:

Raise the lift to full lifting height in stages, that is, raise the lift six inches to a foot at a time and then lower it to the lowest point of lift. It may be necessary to do this five or six times. In lowering the lift, lower it in stages, that is lower the lift six inches to a foot at a time. This will dislodge the dirt and the lift will operate properly.

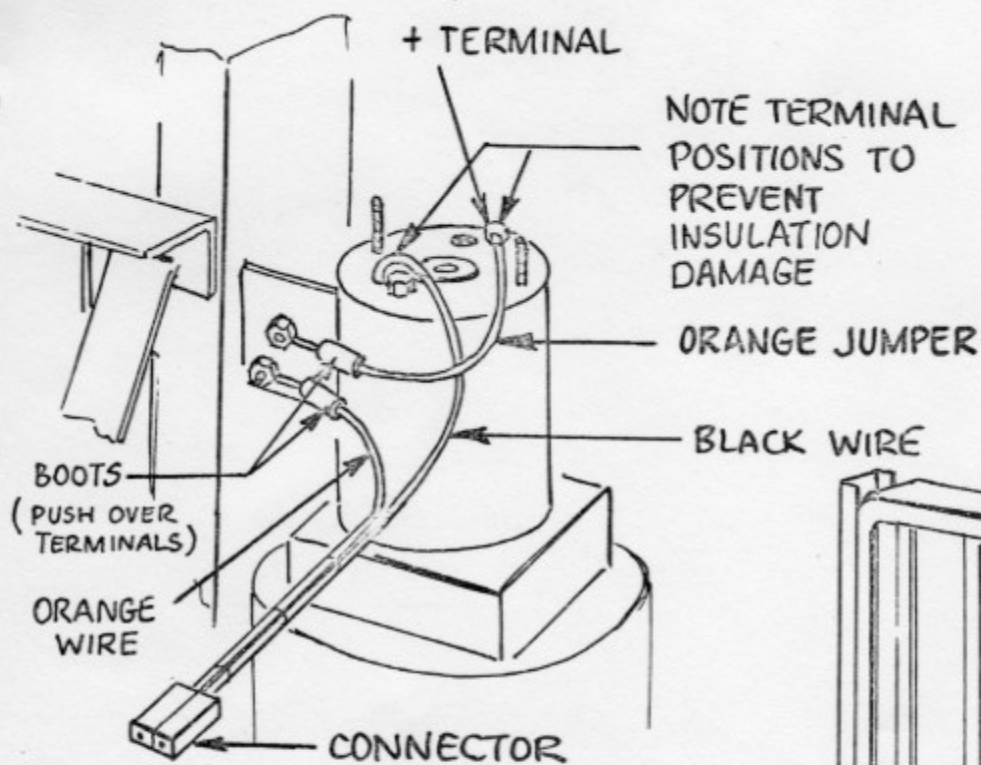


Figure 1

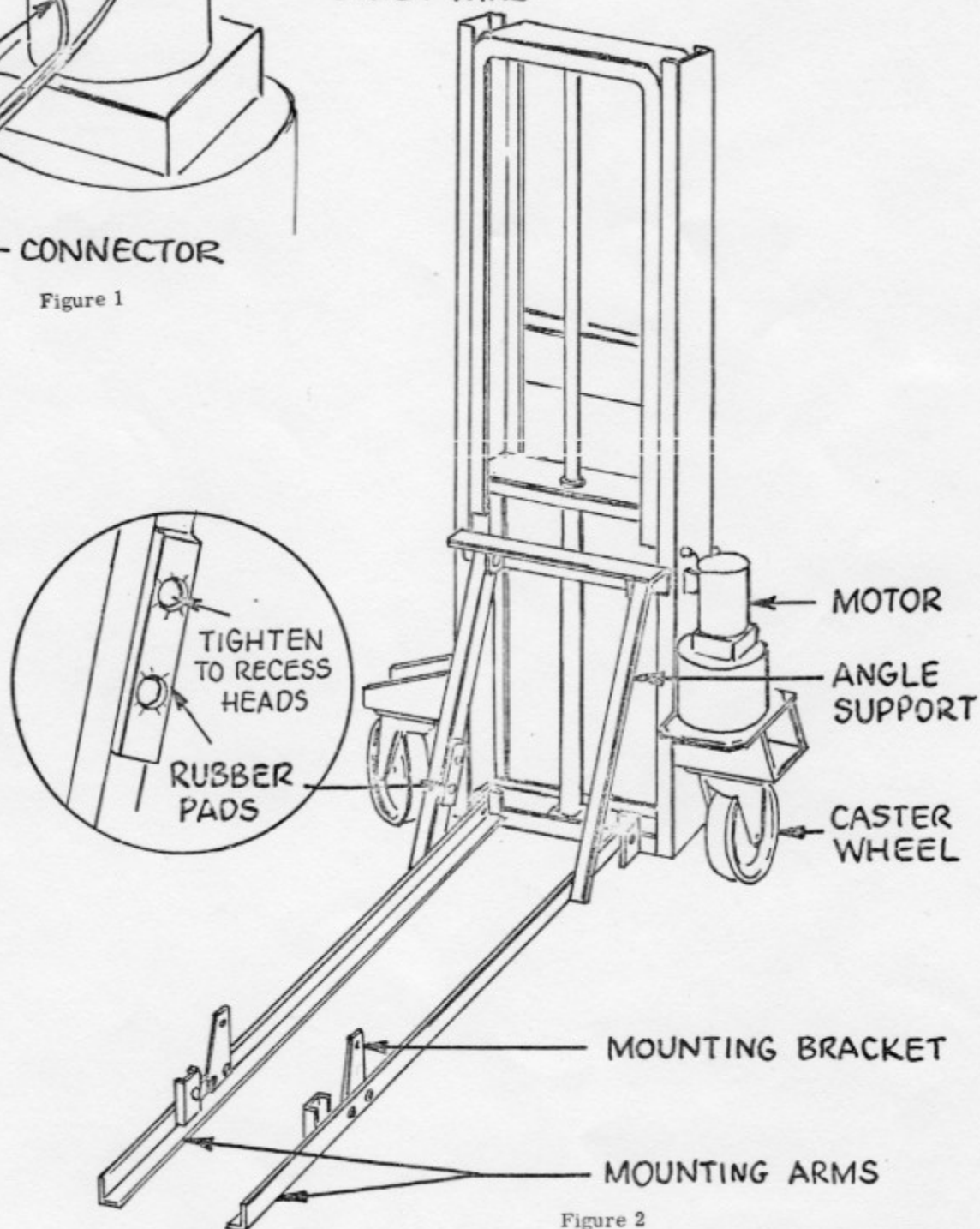


Figure 2