



Electrak[®]

Tractor

INSTRUCTIONS

CANOPY TOP

GEH-3958

Model BC11

PARTS

The Elec-Trak tractor Canopy Top is shipped disassembled. Check to see that the following parts are included in the package:

Part	Qty
Canopy Cover	1
Front and Rear Frame Member	2
Side Frame Member	2
Front Upright	2
Rear Upright	2
Front Mounting Bracket	1
Rear Mounting Bracket	2
Rear Cross Brace	2
1/2-20 x 3/4" Hex Bolt	8
1/4-20 x 1 1/4" Hex Bolt	2
1/4-20 x 1/2" Hex Bolt	2
1/4-20 Lock Nut	12
5/16-18 x 3/4" Hex Bolt	2
5/16-18 x 1" Hex Bolt	2
Washer	4
5/16-18 Lock Nut	4

These parts may be identified from Fig. 1

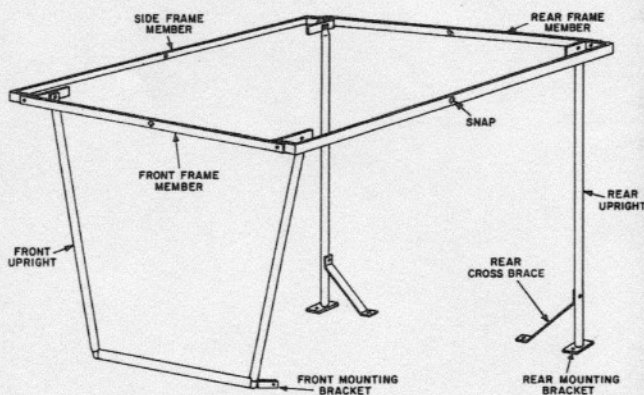


Figure 1

ASSEMBLY

The first piece to be installed is the front mounting bracket. This front bracket is located one inch up from the center of the bottom of the cowl at the

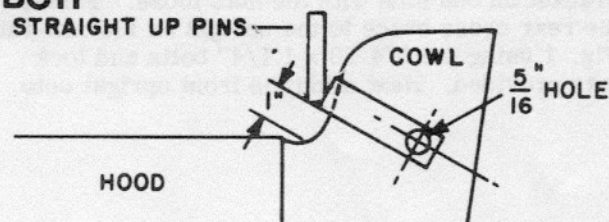


Figure 2

rear edge of the hood. (See Fig. 2). When positioned properly, the bracket will rest flat against the front of the cowl surface with the two solid pins pointing upright. Hold the bracket in place on the cowl so that two holes on the sides can be located. These should be drilled with a 5/16" drill. Fasten the brackets to the cowl with the 5/16-18 x 1" bolts and lock nuts provided. Do not fasten any bolts tightly until the frame is completely assembled.

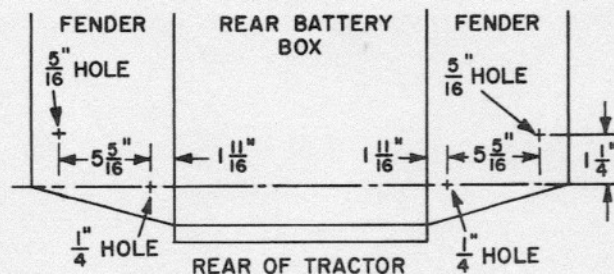


Figure 3

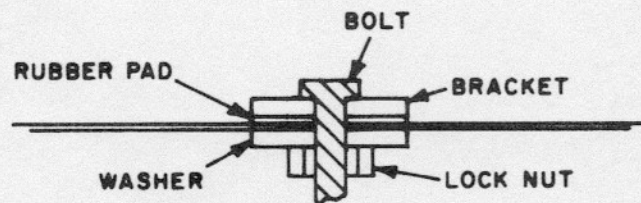


Figure 4

Next, the rear brackets are put in place. The locations and size for the holes may be obtained from Fig. 3. Drill four holes. Position the rear mounting brackets on the fenders as indicated in Fig. 1 with the rubber surface next to the fender. Fasten with 5/16-18 x 3/4" bolts, washers and lock nuts as indicated in Fig. 4.

General Electric Company
Outdoor Power Equipment Operation
Corporations Park, Bldg. 702
Schenectady, N. Y. 12305

GENERAL  ELECTRIC

Place a rear cross brace, rubber surface down, over the 1/4" hole you drilled in each fender as shown in Fig. 1. Fasten with 1/4-20 x 1/2" bolts, washers and lock nuts as shown in Fig. 4.

Slide the rear upright onto the mounting bracket on one side with the nuts loose. Fasten the rear cross brace to the upright as indicated in Fig. 1 using the 1/4-20 x 1 1/4" bolts and lock nuts provided. Next slide the front upright onto

its mounting bracket on the same side. Connect these two with the upper side cross member using 1/4-20 x 3/4" hex bolts and locknuts. (See Fig. 1). Add the other rear and front uprights and connect these with their side cross member. Attach the front and rear cross members as indicated in Fig. 1 using the remaining 1/4-20 x 3/4" bolts and lock nuts. Tighten all bolts securely.

Snap the top on the framework, and the canopy is complete.