



Electrak[®]

Tractor

INSTRUCTIONS

USING CHARGER EXTENSION TO CHARGE BATTERIES EXTERNAL TO TRACTOR

Place the six battery units to be charged next to the tractor that will supply the charging current.

Connect the (+) positive terminal of the first battery to the (-) negative terminal of the second battery. Then the (+) positive terminal of the second battery to the (-) negative terminal of the third battery, etc., until all six battery units are connected in series. (See Fig. 1)

Open Power Disconnect switch on left side of control panel, plug in charger extension. (See Fig. 2)

Connect the Red insulated clip of charger extension to the (+) positive terminal on battery #6 and the Black insulated clip to the (-) negative terminal on #1 battery.

Plug in charger cord from tractor and set timer in normal manner.

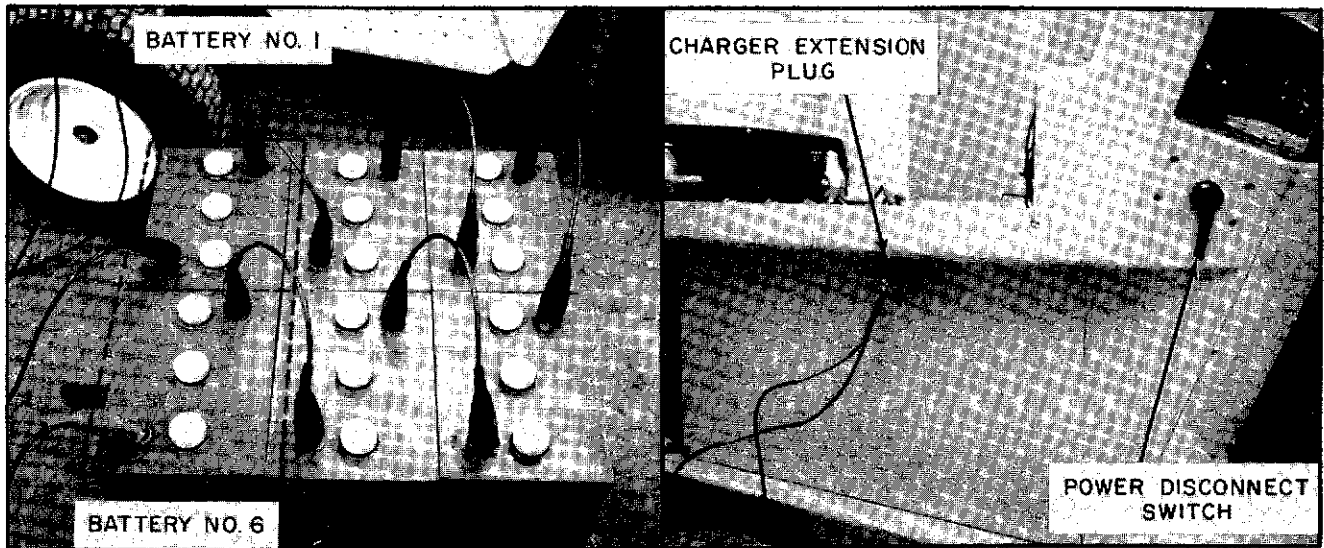


Figure 1

Figure 2

GEH-3289

General Electric Company
Outdoor Power Equipment Operation
Corporations Park, Bldg. 702
Schenectady, N. Y. 12305

GENERAL  ELECTRIC