

## INSTALLATION INSTRUCTIONS FOR REAR

P.T.O. OUTLET. BUNDLE NO. 150-0002.

The Rear PTO Outlet Kit is intended to be used with rear mounted attachments such as the electric drive on lawn sweeper.

When installed properly this outlet provides a power connection at the rear of the tractor which is controlled by the same switch and safety interlocks as the front PTO Receptacle.

**WARNING:** The Power Disconnect must always be opened before working near tractor electrical components. Failure to do so could result in personal injury or damage to the tractor wiring.

### INSTALLATION

1. Open the Power Disconnect.
2. Remove the lower control panel cover and the screws retaining the upper control panel. Hinge the upper control panel forward.
3. Remove the cover from the rear power pack units. Disconnect and remove the batteries from rear battery box.

**NOTE:** If the 7/8-inch hole is pre-punched as shown in Figure 2, it may not be necessary to remove the batteries. Wires can be "fished" through the frame opening with a long, stiff, wire inserted from below the frame.

**WARNING:** To prevent injury, be careful when working in uncovered battery box to avoid shorting terminals with wires or tools.

4. Using the template provided, locate and drill a 3/16-inch hole in the right fender as shown in Figure 1.
5. Locate and punch or drill a 7/8-inch hole in the side of the rear battery box with the template provided as shown in Figure 2. Remove any metal chips from inside the battery box.

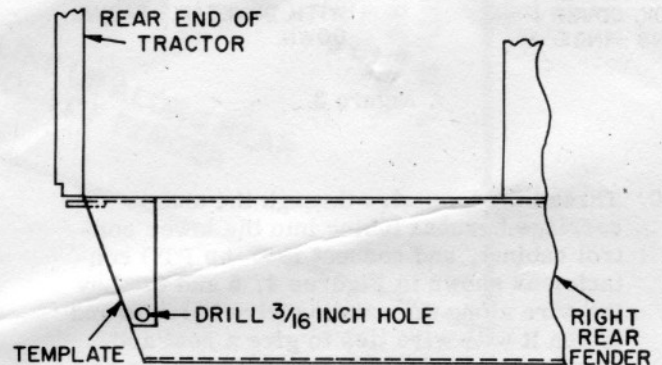


Figure 1

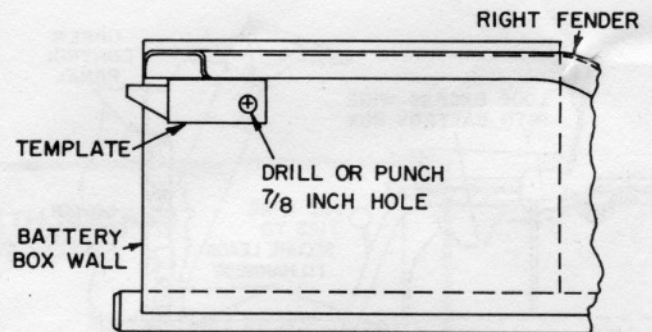


Figure 2

6. Insert a grommet in the 7/8-inch hole just drilled.
7. Thread the long wire of the rear PTO outlet through the grommet from the outside of the box. Train the wire along the side wall of the rear battery box and through the tubing used in the undercarriage harness to pass from the battery box to the underside of the frame.
8. Thread the short wire of the outlet through the grommet.
9. Attach the outlet to the right-hand fender as shown in Figure 3.

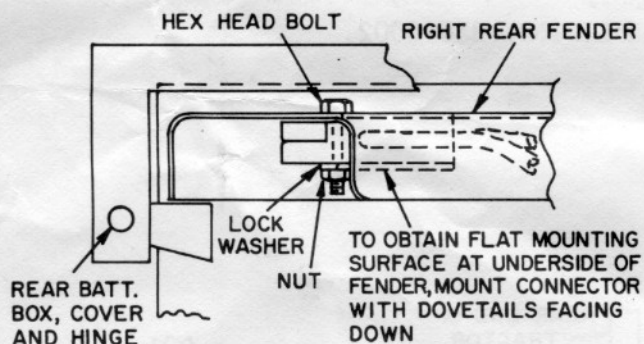


Figure 3

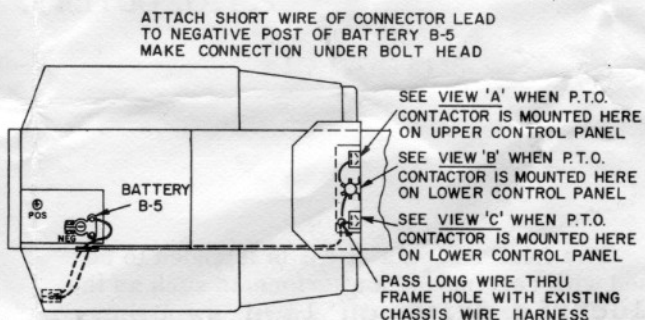


Figure 5

10. Thread the long wire through the under-carriage harness tubing into the lower control cabinet, and connect it to the PTO contactor as shown in Figures 4, 5 and 6. Lay the wire along the existing wire harness and fasten it with wire ties to give a neat and firm support below the frame and in the control cabinet.

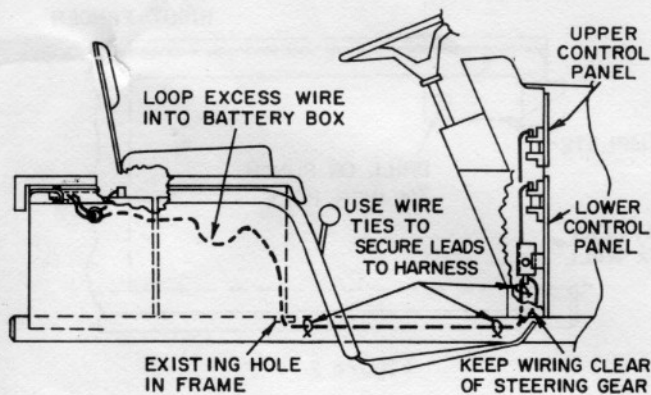


Figure 4

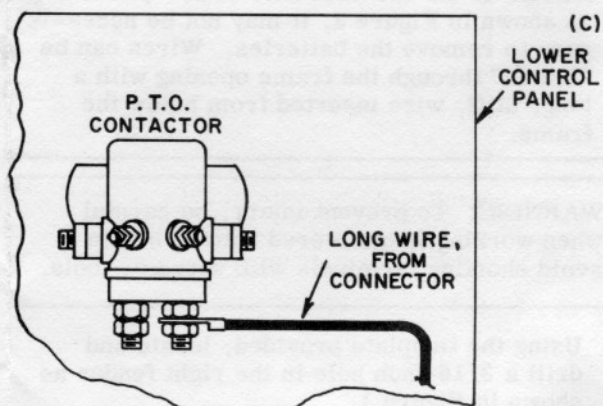
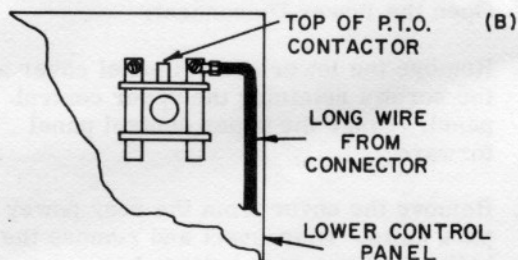
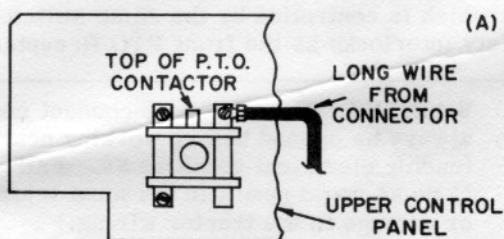


Figure 6

11. Replace and reconnect the batteries.
12. Connect the short connector wire to the B5 battery negative (-) terminal as shown in Figure 5.
13. Engage the power disconnect and test the outlet for power by activating the PTO in the normal fashion.
14. Reassemble the battery cover, control panel cover, and close the upper control panel.

