

# INSTALLATION INSTRUCTIONS FOR EGT-80 HEAVY

## DUTY CONVERSION KIT. BUNDLE NO. 080-0007.

The Heavy-Duty Kit is designed to convert standard EGT-80 Electric Garden tractors to a Heavy-Duty model. The heavy-duty version, in addition to having extended range-per-charge over the standard EGT 80 is equipped with an additional set of mower blades. These are the high profile blades (black), which give a high discharge velocity whereas the standard low profile blades (yellow) give extended mowing range with lower discharge velocity.

### INSTALLATION

**WARNING:** Remove the battery clamp terminating cable 2-01 from the positive post of battery B2 and replace the battery cover before proceeding with this installation. Do not lower the control panel on the exposed battery terminals.

1. Remove the screws retaining the control panel and lower panel to the top of the battery cover.
2. Remove the timer and power cord assemblies. Install the new timer furnished so that it indicates "Off" in its detent position. Reinstall the power cord with its strain relief grommet 19 inches from the terminated end of the cord. See Fig. 1. Refer to Fig. 2 for rewiring information.
3. Remove the rear battery box cover and seat. Locate and drill two 5/16-inch diameter holes in the back wall of the rear battery compartment using the template provided, as shown in Fig. 3.
4. Remove all loose parts and metal chips from the rear battery compartment.
5. Temporarily remove the cross-bar which is mounted over the rear battery compartment.

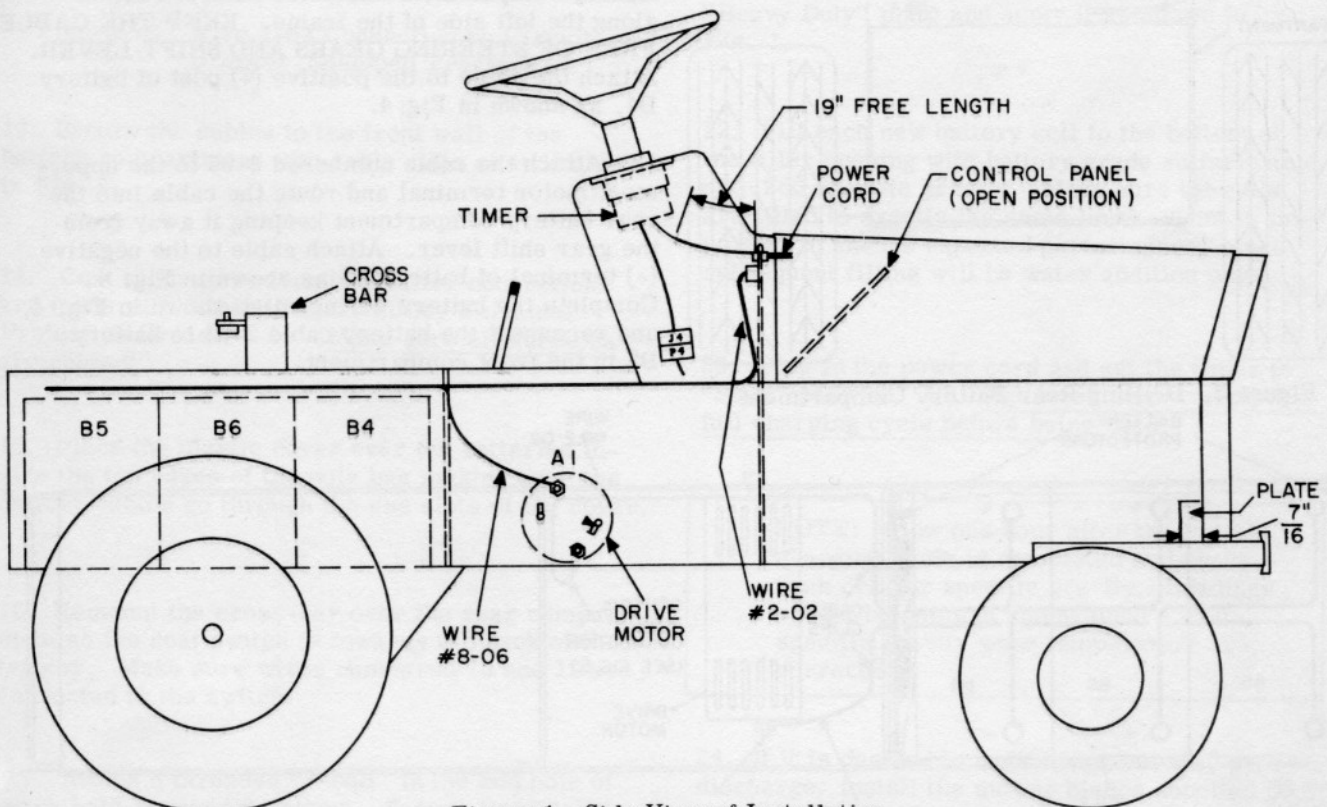


Figure 1. Side View of Installation

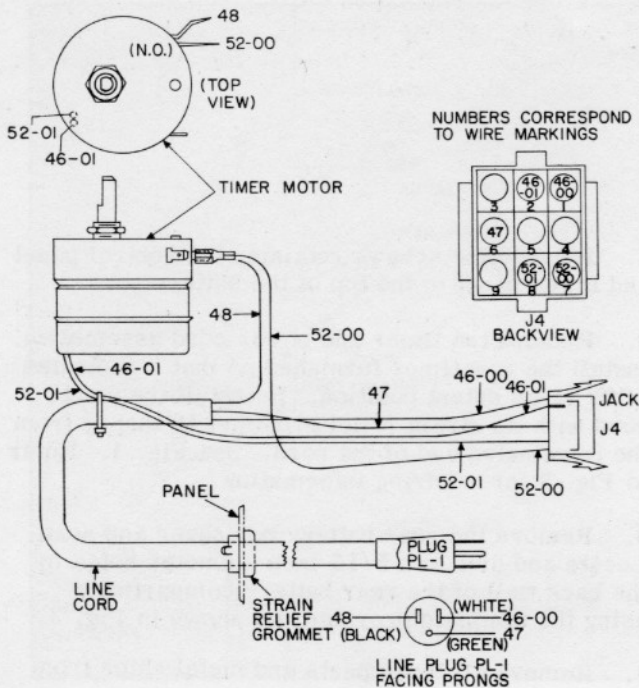


Figure 2

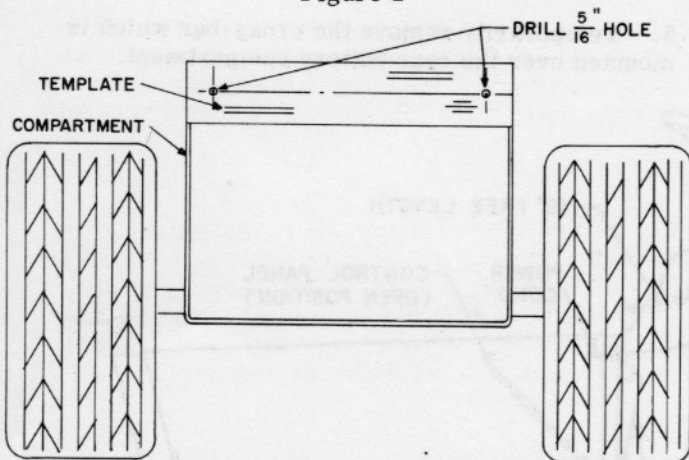


Figure 3. Drilling Rear Battery Compartment

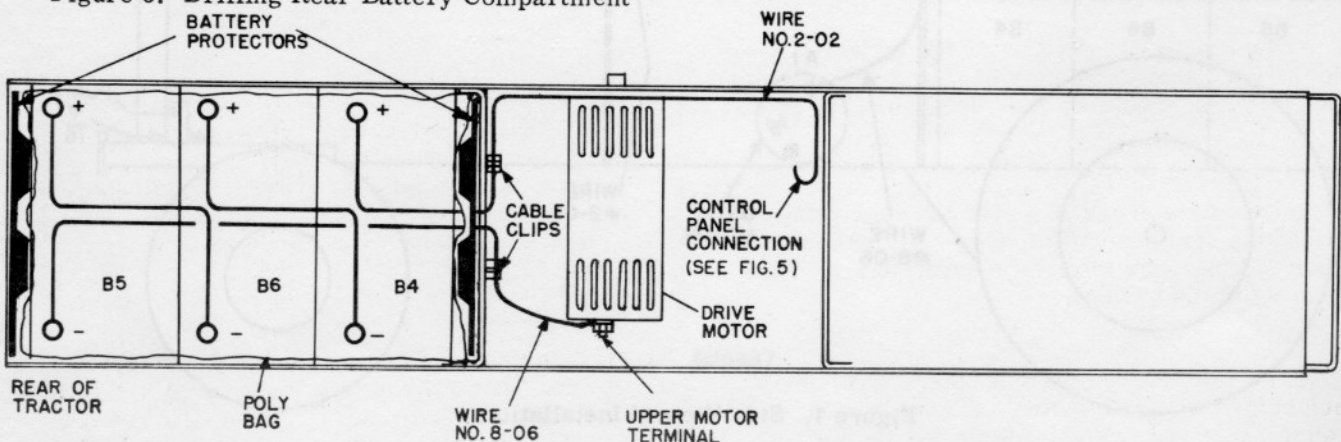


Figure 4. Wiring and Battery Layout

6. Place the battery tray in the bottom of the rear compartment so its drain hole lines up with the drain hole in the floor of the compartment.

7. Unfold the poly bag and place it in the tray so the bag's bottom seam runs from front to rear. Flatten the pockets that form at the seam ends so the bottom of the bag conforms to the tray.

8. Place the vacuum-formed battery protector between the poly bag and the compartment wall at each end of the compartment. Position the protectors so their corrugations will face the battery walls. See Fig. 4.

9. Carefully set the batteries in the bag as shown in Fig. 4 so the sides of the bag remain above the top surface of the batteries in equal amounts. (It may help to tape the upper edges of the bag to the compartment sides temporarily to permit easy insertion of the batteries.) **DO NOT CONNECT BATTERY CABLES AT THIS TIME!**

10. Remove the "H" plate which contains the shift lever and covers the drive motor.

11. Attach the battery cable numbered 2-02 to the insulated stud or the circuit breaker as required. See Fig. 5. Route the cable toward the rear battery compartment under the control cabinet along the left side of the frame. **KEEP THE CABLE FREE OF STEERING GEARS AND SHIFT LEVER.** Attach the cable to the positive (+) post of battery B4, as shown in Fig. 4.

12. Attach the cable numbered 8-06 to the uppermost motor terminal and route the cable into the rear battery compartment keeping it away from the gear shift lever. Attach cable to the negative (-) terminal of battery B5 as shown in Fig. 4. Complete the battery wiring, also shown in Fig. 4, and reconnect the battery cable 2-01 to battery B2 in the front compartment.

