



## 31" TRAILING LAWNSEWEeper

CONVERTIBLE TO ELECTRIC SWEEPER\*

### DESCRIPTION

You will find many work-saving uses for your lawnsweeper. Use it in early spring to give your lawn a good healthful scrubbing. Use it throughout the spring and summer both before and after mowing. Sweeping before mowing stands up grass for a clean, even cut — and protects your mower from sticks, stones, or nuts which might damage the blades of your mower. After mowing, your lawnsweeper will whisk away unsightly grass clippings — leaving your lawn velvety smooth.

Your new Trailer-Sweeper is precision manufactured by experienced craftsmen, using the finest in tools and materials. Although it is ruggedly constructed do not subject it to misuse. **CAUTION: DO NOT PULL YOUR UNIT TOO CLOSE TO FIRE** — the brushes and hamper will burn. Be sure to wipe off your unit after each use. Store in a dry place out of direct sunlight. Don't permit the sweeper to stand in the hot sun unless it is in actual use.

### OPERATION

1. **BRUSH ADJUSTMENT:** Your new trailer-sweeper is equipped with a handy, "from the tractor seat," brush adjustment. To raise, push adjustment tube back and down until desired sweeping height is attained. To lower, push adjustment tube back and pull up to desired sweeping height. See Fig. 4. For best results, brush should merely flick tops of grass blades. Brushes should be raised when transporting to and from sweep area.

2. **SWEEPING SPEED:** For best results, the tractor should travel at a speed of 3 to 5 M.P.H.

3. **DUMPING:** Exclusive Flip-O-Matic rear dump action with Lift-Out Hamper feature. To dump merely pull on Nylon Rope until Hamper turns over dumping debris. Return hamper slowly to its original position by keeping pressure on rope.

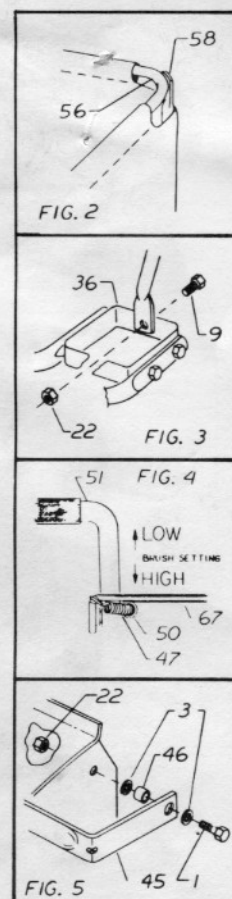
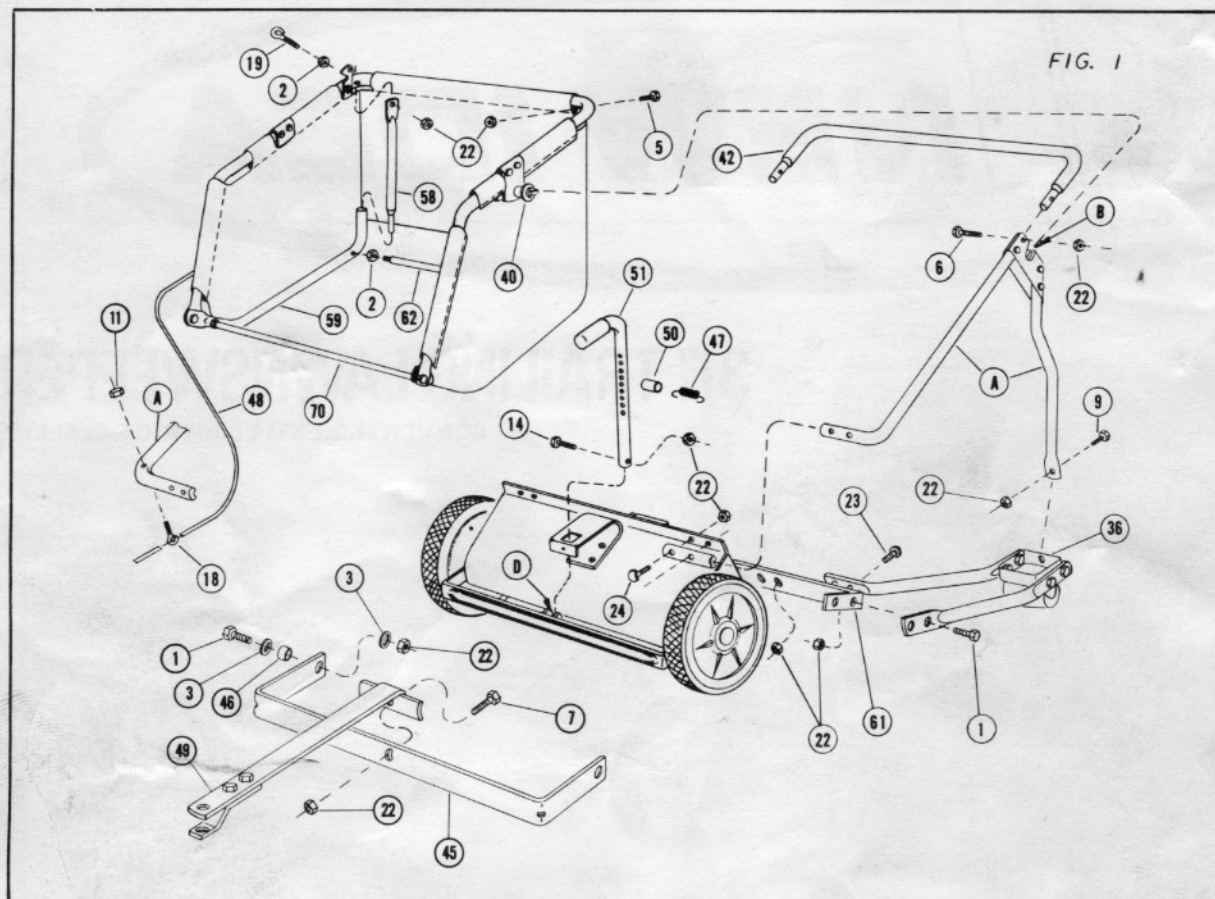
**IN THE FALL:** Sweep **REGULARLY** when the leaves are dropping . . . don't wait until they're all down . . . you'll get better sweeping action if your lawn is cut short.

\* REQUIRES KS33 ELECTRIC POWER CONVERSION KIT

Made for

New Idea Farm Equipment  
420 S. Front St.  
Coldwater, Ohio 45828  
By Lambert Corporation





**IMPORTANT:** This sweeper was in perfect condition when it was shipped to you. If any damage is found when it is unpacked, save the carton and immediately request the delivering carrier to make an inspection report.

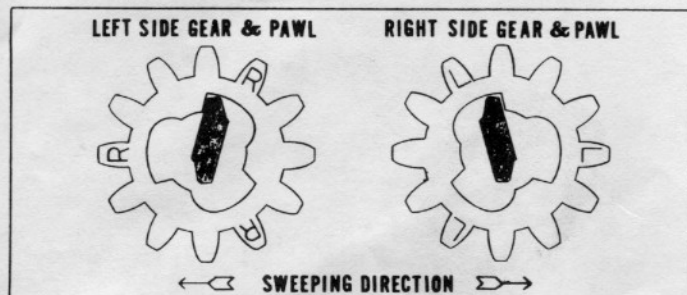
## Assembly

1. Remove all sweeper parts, parts bag and literature from carton.
2. All "Right" and "Left" directions are in reference to position behind sweeper.
3. Only two  $\frac{1}{2}$ " wrenches are required to assemble your new lawnsweeper. Lay out all parts, have tools handy and follow these few instructions.
4. Place Stiffener Bar (61) inside chassis, align holes and fasten outer L.H. Caster Frame (36) outside chassis with Bolts (1) and Nuts (22). Secure Inner Caster Frame to Stiffener Bar with Tube Bolts (23) and Nuts (22). Repeat procedure for R.H. Caster Frame.
5. Install right and left Pivot Support Assemblies "A" to chassis with Bolts (24) and Nuts (22). Fasten Vertical Tubes inside Caster Plate with Bolt (9) and Nut (22). See Figs. 1 and 3.
6. Assemble Rope Guide Eye Bolt (18) and right hand Pivot Support and secure with Nut (11). See Fig. 1.
7. Install Pivot Brace Tube (42) in ends of Pivot Supports and secure with Bolt (6) and Nut (22). See Fig. 1.
8. To install Adjustment Tube (51), push Spring (47) and Retainer Tube (50) back and force Tube between Retainer and Lock Pin. Slide Tube down between lugs "D" and fasten with Bolt (14) and Nut (22). See Figs. 1 and 4.
9. Insert Tie Rod (62) in holes of Bottom Hamper Tubes (59) with Hex Nuts (2) inside against tube. See Fig. 1.
10. Insert reduced ends of Support Tubes (58) in bottom Hamper Tubes. Fasten (do not tighten) top of Support Tube outside Top Hamper Tube (56) with Bolt (5) and Nut (22) on left side. Use Eye Bolt (19), Regular Nut (2) and Lock Nut (22) on right side. See Figs. 1 and 2.
11. Hang Hamper (70) under Brace Tube (42) and place Pivot Pins (40) in slots "B." See Fig. 1.
12. Check Hamper squareness. Front edge of Hamper should run parallel with top edge of chassis. Hamper sides should be equally spaced between Caster Plates. If adjustments are required, twist complete Hamper slightly. Rotate Hamper to dumping position and check for proper clearance throughout entire movement.
13. Tighten all Hamper Bolts:
  - A. Right and left Support Tubes "A."
  - B. Bottom Hamper Tube to Side Hamper Tube connection.
  - C. Hamper Pivot Bracket Bolts.
  - D. Front Tie Rod Nuts.
  - E. Rear Tie Rod Nuts. Tighten Nuts against Bottom Hamper Tubes until Hamper is "TAUT." Do not overstretch and make sure Rod does not protrude thru Tubes and rub Hamper material.
14. Feed Dump Rope (48) through Eye Bolt (18) on right side Pivot Support "A." See Fig. 1.
15. Assemble Hitch Tongue (49) to Hitch "U" Bar (45) with Bolt (7) and Nut (22). See Fig. 1.
16. Remove Hitch Fasteners from sides of chassis and assemble Hitch "U" Bar to each side of chassis as shown in Fig. 5.



## LUBRICATION:

1. Pinion and Wheel Gear: Remove wheel and apply grease to teeth on wheel and pinion gear (Lubriplate 130AA or equal). CAUTION: DO NOT APPLY GREASE TO CENTER AREA OF PINION.
2. Pin Pawl: Apply light oil to Pin Pawl. Heavy oil or grease causes pawl to hang up inside Pinion Gear.

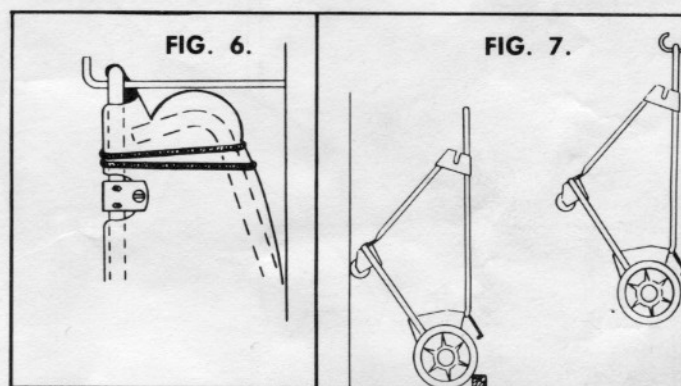


3. Bearings: Light oil, NOT GREASE, should be applied to brush axle once or twice a season.
4. Wheel Axle: Lubricate wheel axle once or twice a season.
5. Pivot Pins: An occasional drop of oil on Pivot Pins will prevent rust and insure free movement.

## STORAGE:

1. Before storing unit for winter, clean it thoroughly.
2. Lubricate unit and wipe metal parts with oily rag.

3. Remove Support Tubes, fold bottom Hamper Tubes and wrap Dump Rope around Hamper and secure for compact storage. Hang folded Hamper from hooks on wall. See Fig. 6.
4. Remove Brush Adjustment Tube (51).
5. Remove Hitch Assembly. Lean or hang complete assembly on wall.
6. Block sweeper wheels and lean unit against wall or hang complete Chassis and Frame Assembly on heavy hooks. See Fig. 7.
7. IMPORTANT: Store unit in a safe, protected, clean dry area.



## PARTS LIST

When ordering parts always list Part No. and name of Part.

Parts available only through Authorized Dealers.

(Specifications subject to change without notice.)

KEY	PART NO.	QTY.	DESCRIPTION
1	L-59	10	5/16-18 x 3/4 Hex Cap Screw
2	L-60	5	5/16-18 Hex Nut
3	L-99	7	5/16" S.A.E. Flat Washer
4	L-64A	6	1/2" S.A.E. Flat Washer
5	L-80	1	5/16-18 x 1 Hex Cap Screw
6	L-81	12	5/16-18 x 1 1/4 Hex Cap Screw
7	L-127	2	5/16-18 x 1 1/2 Hex Cap Screw
8	L-262	4	5/8" E-Type Ret. Ring
9	L-279	8	5/16-18 x 1/2 Hex Cap Screw
10	X-1258	2	1/2-13 x 1 1/4 Hex Cap Screw
11	L-303	3	1/4-20 Lock Nut
12	L-5486M	2	3/8-24 Lock Nut (Spec.)
13	L-5552	1	5/16-18 Pilot Nut (Spec.)
14	X-1027	1	5/16-18 x 1 1/4 Hex Cap Screw
15	X-1042	4	5/16-18 x 5/8 Carr. Bolt (Spec.)
16	X-1043	12	Brush Holder Spring
17	X-1127	2	3/8-24 Lock Nut
18	X-1234	1	1/4-20 x 1 Eye Bolt
19	X-1235	1	5/16-18 x 2 1/4 Eye Bolt
20	X-1293	2	Caster Stud
21	X-1353	2	1/2-13 Lock Nut
22	X-1107	53	5/16-18 Lock Nut
23	X-1358	4	5/16-18 x 1 1/4 Tube Bolt
24	X-1359	8	5/16-18 x 1 Tube Bolt
25	X-2020	2	1/4-20 x 1 Hex Cap Screw
26	L-5471B	2	Hub Cap
27	L-5497A	2	Freeway Bearing
28	L-5750A	2	Die Cast Wheel Assembly
29	L-5753H	2	Pinion Gear
30	L-5761H	2	Pinion Pawl
31	1-1640	2	Caster Bracket
32	1-1179	1	Brush Stud Axle
33	1-1633	2	Caster Roller
34	1-1421	3	Brush Strip
35	1-1637	2	10 x 2.25 Tire
36	1A-1638	2	Caster Plate Assembly
37	1-1428	2	Wheel Shield
38	1-1429	4	Frame Pivot Bracket
39	1-1430	2	Pivot Bracket

KEY	PART NO.	QTY.	DESCRIPTION
40	1-1443	2	Pivot Pin
41	1-1444	2	Wheel Stud
42	1-1454	1	Pivot Stand Tube
43	1-1455	1	Hamper Tie Rod
44	L-288	2	Oiler
45	1-1817	1	"U" Bar
46	1-1526	4	Spacer
47	1-1465	1	Adjustment Spring
48	1-1467	1	Dump Rope
49	1A-1782	1	Hitch Tongue
50	1-1474	1	Retainer Tube
51	1-1479	1	Adjustment Tube
52	1-1601	2	Pivot Stand Brace
53	1-1825	2	Pivot Stand Brace
54	1-1488	1	Pivot Stand Tube R.
55	1-1489	1	Pivot Stand Tube L.
56	1-1493	1	Top Hamper Tube
57	1-1495	2	Side Hamper Tube
58	1-1496	2	Hamper Tube
59	1-1497	2	Bottom Tube
60	1-1603	1	Pivot Support L.
N.I.	1-1602	1	Pivot Support R.
61	1-1770	1	Stiffener
62	1-1519	1	Rear Hamper Rod
63	1-1522B	1	Handle Grip
64	1A-1780	1	Bumper Assembly
65	1A-1484	1	Bracket Assembly
66	1A-1440	2	Lever Assembly
67	1A-1524	1	Adjustment Bracket
68	1A-1419	1	Brush Axle Assembly
69	1A-1791	1	Shield Assembly
70	1A-1878	1	Hamper Assembly
71	1-1537	1	Hamper Latch
72	1-1538	1	Latch Spring
73	1-1604	2	Rubber Sleeve
74	1A-1408	1	Drive Sprocket Assembly
75	X-1126	2	3/8-24 Hex Nut
76	X-1070	2	3/8" Lock Washer
77	1-1553	1	Hitch Pin Bracket

# Drawing

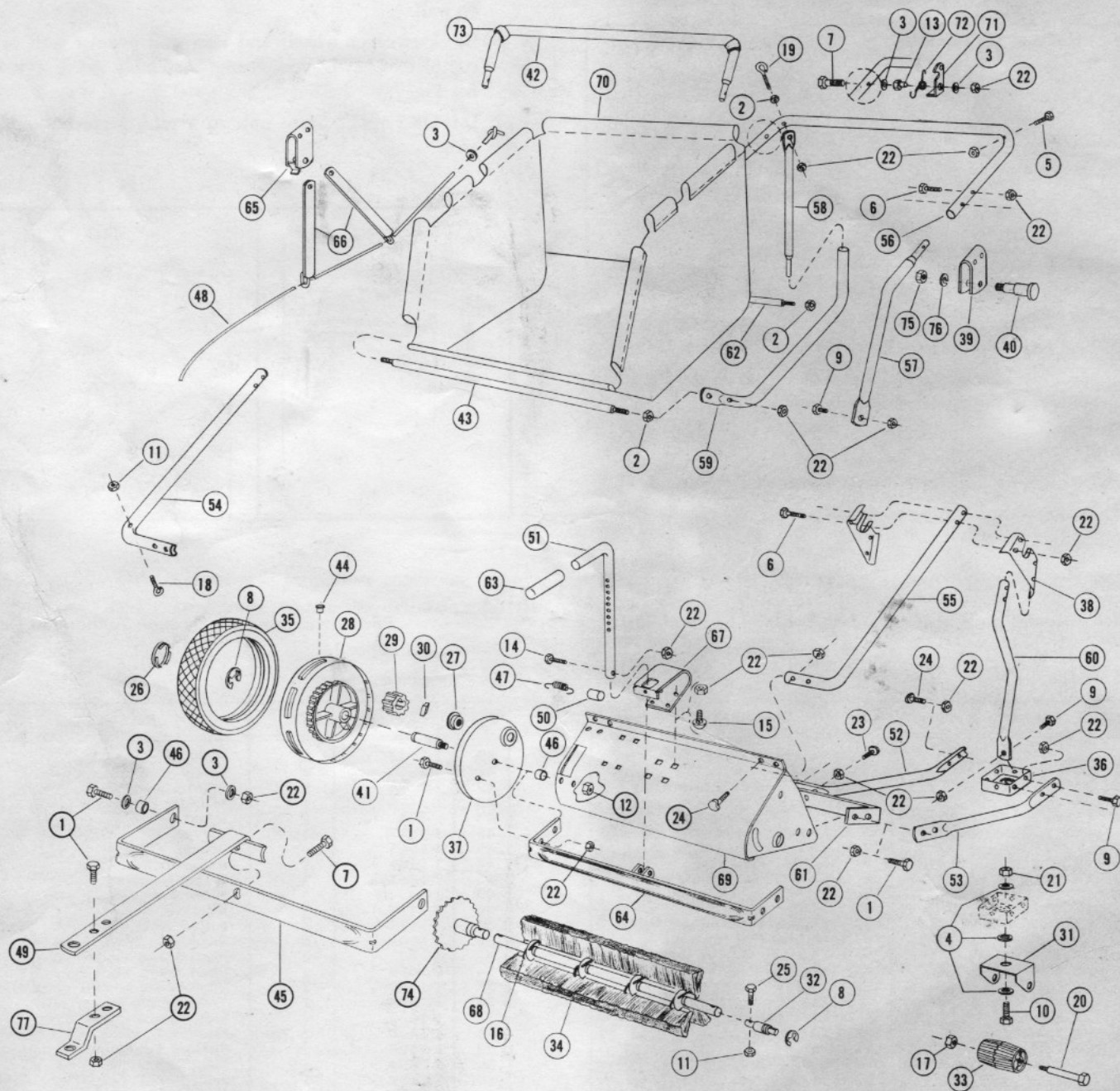


FIG. 9

