



Elec-Trak NEWS

Garden Tractor

72-14

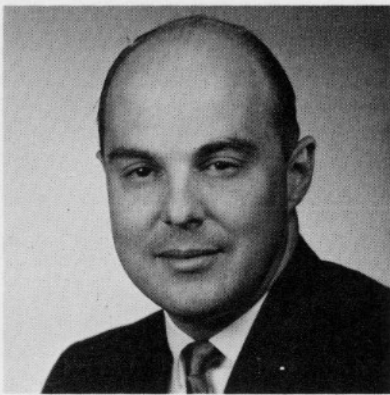
May 11, 1972

SPECIAL ELEC-TRAK SALE - OPEO EMPLOYEES ONLY

As announced in our last issue, a number of Elec-Trak garden tractors are being offered for sale to OPEO employees. These relatively new tractors - some used, some demonstrators - implements and accessories will be on display in Bldg. 703 on Saturday, May 13 from 9:00 a. m. to 1:00 p. m.

Sales will be on a cash basis for lower priced tractors. Financing may be arranged for the more expensive items. Pick up of all items must be completed within one week of the sale.

MEET JERRY PALMER!!



Jerry Palmer of our Quality Assurance group is a quality control engineer in the mechanical area. In this position he is responsible for defining quality standards, inspection, test points and methods of control required to assure a quality product. Jerry becomes actively interested at the design stage where he develops needed test plans. As the product moves to the production stage, his job is to plan a smooth transition incorporating required controls on initial production and developing plans for continued optimum quality control.

SAFETY GLASSES

Experience has taught us that the best practical way to protect our eyes is by wearing safety glasses. Because eye protection is so important, the Company has a policy requiring the wearing of safety glasses by all factory employees. OPEO management is striving to make our operation a safer place in which to work. Employees have an equal responsibility in working toward this objective.

Company policy requires all employees who work in or pass through the factory, shops or warehouse areas to wear safety glasses. New employees who do not have safety glasses should inform their supervisor immediately. No exception will be made and this policy will be strictly enforced.

Safety glasses, both plain and prescription, are provided for employees at no cost. Your eyes are one of your most valuable possessions. Protect them by wearing your safety glasses!



