



# Electrak<sup>®</sup> NEWS

## Garden Tractor

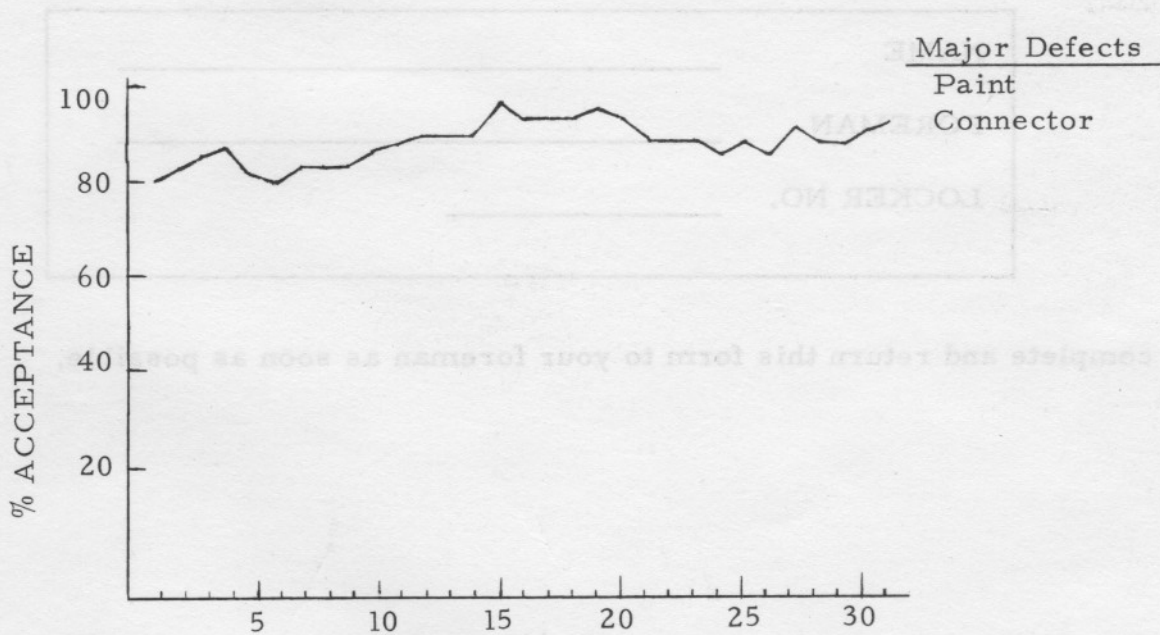
No. 71-6

February 5, 1971

TRACTOR QUALITY PERFORMANCE CHART has been installed as part of our "Ride with Pride" Quality Control Program. This chart will show how well we are doing, major defects, and will also serve as a continuous reminder of the importance on maintaining high quality products. To be sure everyone understands this chart, we are reproducing it here with a brief explanation.

### DAILY TRACTOR PERFORMANCE

JANUARY



The horizontal line graduated 1 through 31 represents the day of the month.

% Acceptance represents the percentage of tractors which pass final test and inspection.

For example: 40 tractors were tested and inspected on January 15 and 38 were found acceptable by Quality Control. The % acceptance was  $\frac{38}{40}$  or 95%.



Major Defects represents reasons for rejecting most tractors the previous day. These are the areas that demand serious attention by operators so that they can be reduced to a minimum.

As always, our goal is to achieve 100% acceptance. Any time the acceptance line drops much below 100 this means that there has been a serious reduction in quality performance which requires immediate attention.

Quality is everyone's business.

### CLOTHING LOCKERS

We are looking over the possible need for additional lockers so that we can provide everyone with adequate storage space for clothing and other personal items. To help us do this we ask your cooperation in completing the attached form.

NAME	_____
FOREMAN	_____
LOCKER NO.	_____

Please complete and return this form to your foreman as soon as possible.

