

GENERAL ELECTRIC

GENERAL ELECTRIC COMPANY, CORPORATIONS PARK, BUILDING 702,
SCHENECTADY, NEW YORK 12305, Phone (518) 374-2211

OUTDOOR

POWER EQUIPMENT

OPERATION

June 9, 1972

TO: ALL ELEC-TRAK TRACTOR DEALERS

As a part of our continuing effort to insure that our Elec-Trak tractor products meet all of our design objectives and give you the maximum sales opportunity, one of our factory quality auditors is visiting your business. During his visit, he will carefully check all set up E8M and E10M models to be sure that they carry the latest product improvements and meet the performance standards intended for them.

Many of the earliest production of the E8's and 10's will lack several additional components which improve their appearance and add to their reliability and quietness. Our auditors will add these improvements to the models which you have on the floor and will leave you with the parts and instructions so that you can update each of the models which you still have in crates or which have been sold to customers. These improvements are as follows:

1. Three bolts and spacers will be added to the grill to increase its rigidity and appearance.
2. They will show you how to slightly reform the hood and add four small rubber bumpers which will improve the appearance and remove any possibility of noise coming from that component.
3. They will also provide you with a new clamp and bracket which is to be added to each mower motor on the 36" mower. This clamping will prevent vibration from being set up in the motors and mower deck when blades with poor balance or severe wear provide an out of balance load on the motor shaft. This clamping will also substantially reduce related noise which can occur in that situation.
4. The auditors will also be checking and showing you how to be sure that all of the lift handle push buttons are tightly screwed in so as to prevent their loss and to illustrate the proper tuning of the clutch and belt pulleys so that your predelivery preparation will provide the customer with all of the designed-in benefits of the product. The auditors will also show you a number of other good practices, in setting up the tractors for delivery, which will add to your customer's satisfaction.

The auditor will leave you with all parts necessary for each of the E8's and 10's which have already been delivered to your firm. He will also provide you with a summary form on which to list your additional tractors as they are updated. This form will also allow you to quickly and easily be reimbursed for the labor and travel time involved in the work. Since all of this work requires only an electric drill and miscellaneous hand tools, the work on the customer's tractors should be performed at location without transporting the equipment. We will allow, and you should enter on the form, 1.5 hours of labor at our standard rate for each tractor already sold plus the normal 1/2 hour travel allowance. On all tractors still in stock, we will reimburse you for one hour labor at the standard GE allowance. It is imperative that this work be done on all additional units before sale and on customer units at the earliest possible time.

After consultation with a large sample of our dealers, we have decided to institute a summer sale program which will consist of a co-op free mower program from July 1 through August 15. Under this arrangement we will credit your account for \$75 for each 42" mower provided free on a customer tractor sale and \$60 for each 36" mower given away with a tractor sale. This credit will apply when we receive payment and the delivery report for the tractor. All payments and delivery reports must be received here at Scotia by August 21 to qualify for the co-op credit. Our auditors will give you a special free mower promotion sign to attach to the seat of one of your Elec-Trak's which is displayed on the floor.

While our discussions with all of you indicate that the season has started a little bit late, we are most gratified to find that your Elec-Trak sales are growing very steadily and it once again appears that your Elec-Trak tractors will continue to sell throughout the summer months and into the fall as was true in 1970 and 1971. I am sure that the summer free mower program will substantially add to your success in this effort.

Sincerely yours,



Bruce R. Laumeister
General Manager

BRL/lar



E8M/E10M ELEC-TRAK TRACTOR AUDIT

Early information from the field indicates that acceptance of the E8M/E10M models is good, but could be increased by a few improvements. In response to this information, a quality audit and modification is to be carried out on all units produced through June, 1972. (All serial numbers CR through FR.)

This audit of E8M and E10M Elec-Trak tractors involves modification in three major areas: mower motors, grill reinforcement, and hood reshaping. Instructions for easily accomplishing desired changes follows.

Mower Motors

The mower motor modification effectively eliminates vibration and noise caused by any imbalance in the blades. The addition of a clamp and bracket to each motor effectively anchors the motors at a second point and minimizes any vibration that may occur. All mowers manufactured through June, 1972 should be modified as follows:

1. With the mower removed from the tractor, assemble one clamp around the motor near the base. Place a bracket as shown in the Figure 1A and secure with the clamp.
2. Using the bracket as a drill jig, drill 2 holes using a 0.28 (9/32) inch drill bit through the angle support of the mower. Use care to prevent marring the mower housing when the drill bit penetrates the angle support.
3. Repeat steps 1 and 2 for the other angle support.
4. Remove the brackets and install on the underside of each support so their tabs are flush with the motor and directed upwards as shown in Figure 1B. Secure with 1/4-20 x 3/4 inch bolts inserted from the top side with a plain washer, lockwasher and nut below each support. Finger tighten each nut.
5. Install a motor clamp around each motor so it engages its corresponding bracket tab. While holding the clamp parallel with the mower deck, tighten the clamp screw. Locate the screw toward the angle support to be inconspicuous when mower is assembled to tractor.
6. After clamps are tightened, tighten nuts holding motor brackets to angle supports.
7. Reassemble mower to tractor.

Grill Support

Three additional support points are to be added to the grills on all E8M and E10M Elec-Trak tractors manufactured through June, 1972 as follows:

WARNING: Secure hood in raised position by tying to steering wheel.

1. Remove front battery and bumper.
2. Center punch the sides of the grill at a point as shown in Figure 2, so that subsequent drilling will allow the placement of a spacer between the grill and battery compartment as shown in Figure 2. Make sure the punch mark is located so the drilled hole will not tear through the edge of the grill or compartment wall.
3. Drill a 1/8 inch pilot hole at each punch mark and then drill a 0.281 (9/32) inch hole at each pilot hole making sure the drill bit passes through the battery compartment perpendicularly. See Figure 2 insert.
4. Force a spacer between the holes in the grill and compartment wall and secure with a 1/4-20 x 1 1/4 inch bolt, lockwasher and nut with the bolt head on the outside of the grill. Repeat for other side.
5. Center punch a point in the center lower edge of the grill so subsequent drilling will enter the front battery compartment as shown in the insert of Figure 2.
6. Drill a 1/8 inch pilot hole at the punch mark and then drill a 0.281 (9/32) inch hole at the pilot hole making sure the drill bit penetrates the compartment wall perpendicularly.
7. Force a spacer between the holes in the grill and compartment wall and secure with a 1/4-20 x 1 1/4 inch bolt, lockwasher and nut with the bolt head on the outside of the grill.
8. Reinstall bumper and front battery.
9. Close hood slowly and if the newly installed bolts obstruct the hood, readjust the hood to allow clearance.
10. Locate rubber bumpers on the lower front inside corners of the hood so in the closed position the bumpers rest on the sides of the grill to prevent vibration.

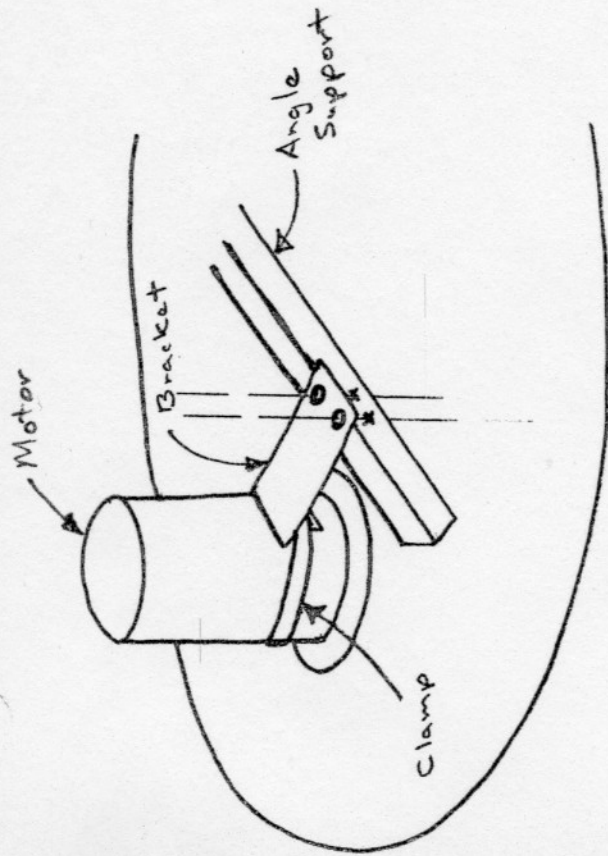


Figure 1A

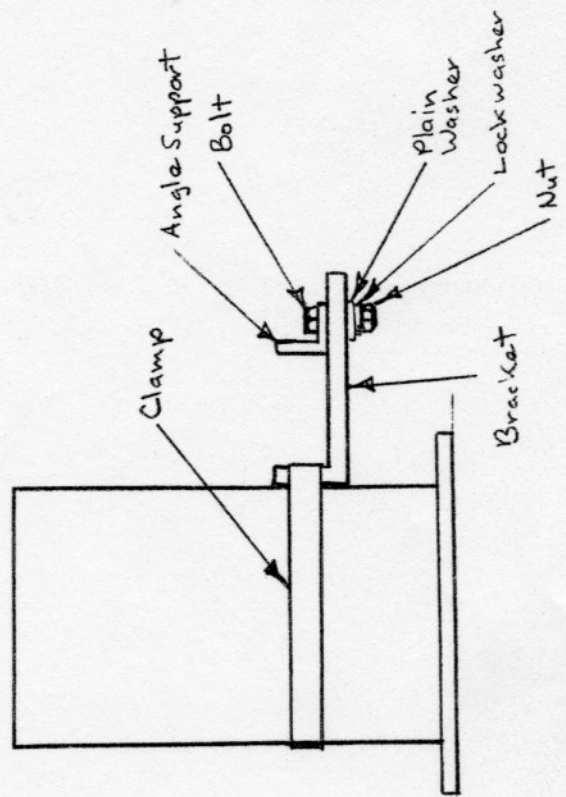


Figure 1B

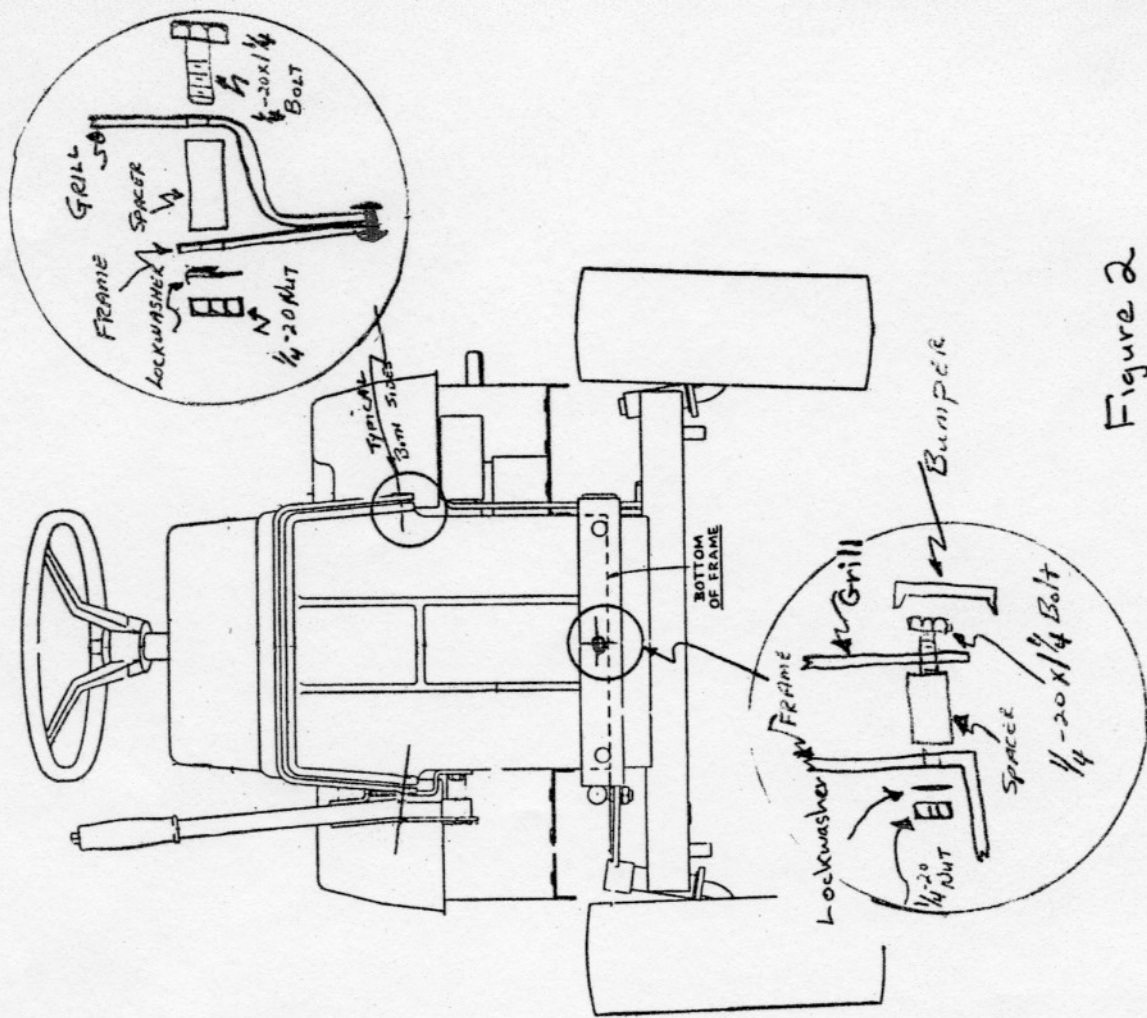


Figure 2

Hood Reshaping

Reform hood sides to eliminate flare-out by exerting uniform inward pressure on both sides of the hood while in the raised position. When properly reshaped, there should be approximately 1/8 inch clearance along the length of the hood and the battery compartment walls.

Lift Release Button

The lift release button located at the top of the lift handle should be checked. If the button is loose, rotate it clockwise until fully tightened.

Audit Checks

The following additional points should be checked to insure that the tractor is performing as intended.

1. Lift the mower through its entire range and see that the mower does not contact the rear wheel, and that there is no interference between the mower and the clutch rod.
2. If the tractor has any unusual noise, check to see that there is no rubbing on the belt guard, that the pulleys are in alignment and do not rub on the frame, that the belt does not contact the belt retainer in front or the whip pins in the rear, and that the brake pedal clears the foot rest in the driving position.

[illegible]